

## PRODUCT DATASHEET

### HTN 75/230...240 I

HALOTRONIC®-COMPACT – HTM, HTN | Electronic transformers for low-voltage halogen lamps



#### Areas of application

- Effect and accent lighting
- Living rooms
- Object lighting
- Conference rooms
- Restaurants
- Recessed and surface-mounted furniture luminaires
- Shop lighting
- Event rooms

#### Product benefits

- Very low power loss thanks to high efficacy
- Strain relief suitable for different cable types (HTM)
- Suitable for space-critical installation thanks to compact functional design
- Extremely compact transformer for highly space-critical installation conditions (HTN)
- Protective operation throughout the entire partial-load range for long lamp life

#### Product features

- Line frequency: 50...60 Hz
- RI suppression: to EN 55015 (A1: 2007)/CISPR 15, EN 55022
- Line harmonics according to EN 61000-3-2
- Immunity according to EN 61547
- Safety: to EN 61347
- Short-circuit protection, overload protection, overtemperature protection: electronically reversible
- Electrical isolation between the primary side and the secondary side
- Dimmable on the leading edge (without HTN) and trailing edge

TECHNICAL DATA

Electrical data

Nominal wattage	79.00 W
Nominal voltage	230...240 V
Nominal output voltage	11.5 V / 11.7 V <sup>1)</sup>
Input voltage range	230...240 V
Input voltage AC	207...254 V
Inrush current	0.37 A <sup>2)</sup>
Mains frequency	50/60 Hz <sup>3)</sup>
Power factor $\lambda$	0.95 <sup>4)</sup>
ECG efficiency	95 % <sup>5)</sup>
Device power loss	4 W <sup>2)</sup>
Max. ECG no. on circuit breaker 10 A (B)	37
Max. ECG no. on circuit breaker 16 A (B)	59
Operating frequency	50 kHz

1) 75 W / 20 W

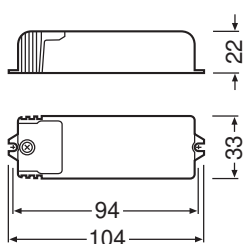
2) Maximum

3) Approximately

4) Minimum

5) At full load

Dimensions & Weight



Length	104.00 mm
Mounting hole spacing, length	98,0 mm
Width	33.00 mm
Height	22.00 mm
Cable cross-section, input side	1.5 mm <sup>2</sup>
Cable cross-section, output side	1.5 mm <sup>2</sup>
Wire preparation length, input side	10 mm / 6,0 mm <sup>1)</sup>

Wire preparation length, output side	10 mm / 6,0 mm <sup>1)</sup>
Product weight	68.00 g

<sup>1)</sup> Cable sheath / Wire

### Colors & materials

Product color	Grey
Casing material	Plastic
Body material	Plastic

### Temperatures & operating conditions

Ambient temperature range	0...+50 °C
Maximum temperature at tc test point	85 °C
Max.housing temperature in case of fault	110 °C
Permitted rel. humidity during operation	5...85 % <sup>1)</sup>

<sup>1)</sup> Maximum 56 days/year at 85 %

### Additional product data

Encapsulated	No
--------------	----

### Capabilities

Dimmable	Yes
Dimming range	0...100 %
Overheating protection	Automatic reversible
Overload protection	Automatic reversible
No-load proof	Yes
Short-circuit protection	Automatic reversible
Max. cable length to lamp/LED module	2,0 m
Suitable for fixtures with prot. class	II
Type of connection, output side	Screw terminal




### Certificates & Standards

Approval marks – approval	VDE / VDE-EMC / E1 approval / EAC
Standards	Acc. to DIN VDE 0875/CISPR 15/EN 55015 / Acc. to EN 61547 / Acc. to EN 61000-3-2 / Acc. to EN 61047 / Acc. to EN 61347 / Acc. to EN 55015
Protection class	II
Type of protection	IP20

### LOGISTICAL DATA

Temperature range at storage	-40...+85 °C
------------------------------	--------------

DOWNLOAD DATA

Documents and certificates	Document name
 User Instruction	334738_HALOTRONIC – Manual
 User Instruction	334136_Technical guide - HALOTRONIC for low-voltage halogen lamps
 User Instruction	590733_EAC - HTL / HTM / HTN
 Declarations of conformity	HALTORONIC CE 3674444 210120
 Declarations of conformity	710835_EC-DOC Halotronic
 Certificates	334964_ENEC-Marks approval
 Certificates	504178_EAC HT family
 Certificates	334962_EMC-Marks approval
 Certificates	HALOTRONIC EMC 134590 080720
 Certificates	VDE ENEC Certificate 40024665
 Certificates	EAEC N RU D-DE.MYu62.B.01275 20 26.03.2020-25.03.2025
CAD/BIM files	Document name
 CAD data 3D PDF	313417_98(104)x33x22 9900005

LOGISTICAL DATA

Product code	Packaging unit (Pieces/Unit)	Dimensions (length x width x height)	Gross weight	Volume
4008321073037	Unpacked 1		70.00 g	
4008321073044	Shipping box 20	235 mm x 75 mm x 179 mm	1692.00 g	3.15 dm <sup>3</sup>

The mentioned product code describes the smallest quantity unit which can be ordered. One shipping unit can contain one or more single products. When placing an order, for the quantity please enter single or multiples of a shipping unit.

DISCLAIMER

Subject to change without notice. Errors and omission excepted. Always make sure to use the most recent release.

