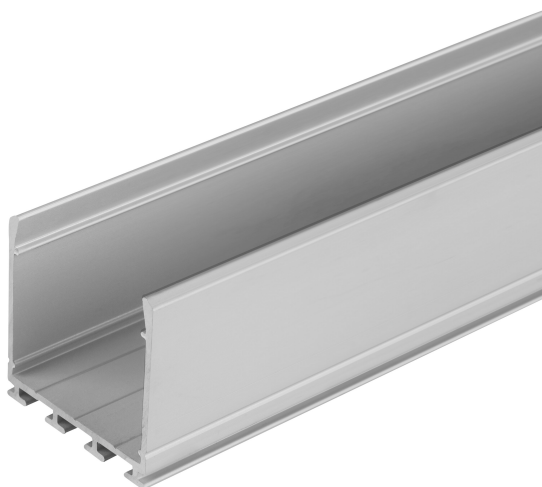


# PRODUCT DATASHEET

## LS AY -PW03/U/26X26/14/2

Wide Profiles for LED Strips | Wide Profiles for LED Strips



---

### Areas of application

- General indoor illumination

---

### Product benefits

- Robust aluminum profile
- Quick and simple installation

## TECHNICAL DATA

### Dimensions & Weight

Length	2000 mm
Width	26.0 mm
Height	26.0 mm
Product weight	480.00 g

### Colors & materials

Product color	Grey
---------------	------

### Temperatures & operating conditions

Ambient temperature range	-15...+45 °C
Temperature range in operation	-15...+45 °C






### Additional product data



Product remark	Can be combined with all LEDVANCE LED Strips including connectors and endcap
----------------	--

## LOGISTICAL DATA


Temperature range at storage	-35...+85 °C
------------------------------	--------------

### Accessories Optional

Product image	Product name	EAN
	LS AY -PC/W02/C/1	4058075402348
	LS AY -PC/W02/C/2	4058075402164
	LS AY -PW03/MB	4058075276680
	LS AY -PC/W02/D/2	4058075401983
	LS AY -PW03/EC	4058075277458

Product image	Product name	EAN
	LS AY -PW03/EC/H	4058075277489
	LS AY -PC/W02/D/1	4058075279421

DOWNLOAD DATA

Tender texts	Document name
 Tender documents	Wide Profiles for LED Strips PW03U26X26142-EN

LOGISTICAL DATA

Product code	Packaging unit (Pieces/Unit)	Dimensions (length x width x height)	Gross weight	Volume
4058075401501	BAG 1	2,000 mm x 40 mm x 26 mm	481.00 g	2.08 dm <sup>3</sup>
4058075401518	Bundle 5	2,000 mm x 40 mm x 130 mm	2406.00 g	10.40 dm <sup>3</sup>
4058075401525	Shipping box 25	2,040 mm x 210 mm x 160 mm	13404.00 g	68.54 dm <sup>3</sup>

The mentioned product code describes the smallest quantity unit which can be ordered. One shipping unit can contain one or more single products. When placing an order, for the quantity please enter single or multiples of a shipping unit.

DISCLAIMER

Subject to change without notice. Errors and omission excepted. Always make sure to use the most recent release.