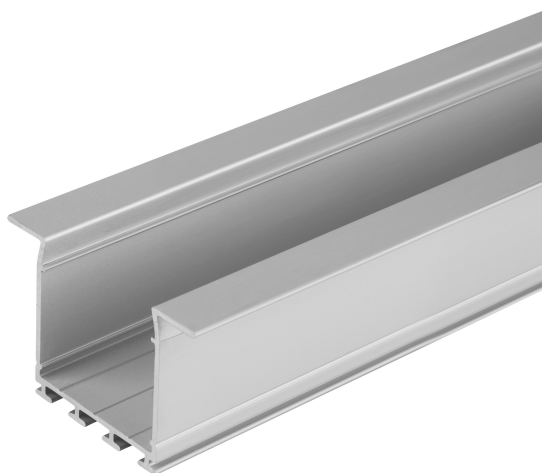


PRODUCT DATASHEET

LS AY -PW02/UW/39X26/14/2

Wide Profiles for LED Strips | Wide Profiles for LED Strips



Areas of application

- General indoor illumination

Product benefits

- Robust aluminum profile
- Quick and simple installation

TECHNICAL DATA**Dimensions & Weight**

Length	2000 mm
Width	39.0 mm
Height	26.0 mm
Product weight	520.00 g

Colors & materials

Product color	Grey
---------------	------

Temperatures & operating conditions

Ambient temperature range	-15...+45 °C
Temperature range in operation	-15...+45 °C






Additional product data



Product remark	Can be combined with all LEDVANCE LED Strips including connectors and endcap
----------------	--

LOGISTICAL DATA


Temperature range at storage	-35...+85 °C
------------------------------	--------------

Accessories Optional

Product image	Product name	EAN
	LS AY -PW02/EC/H	4058075277427
	LS AY -PC/W02/D/1	4058075279421
	LS AY -PC/W02/C/1	4058075402348
	LS AY -PW02/EC	4058075277397
	LS AY -PC/W02/D/2	4058075401983

Product image	Product name	EAN
	LS AY -PC/W02/C/2	4058075402164
	LS AY -PW02/MB	4058075276659

DOWNLOAD DATA

Tender texts	Document name
 Tender documents	Wide Profiles for LED Strips PW02UW39X26142-EN

LOGISTICAL DATA

Product code	Packaging unit (Pieces/Unit)	Dimensions (length x width x height)	Gross weight	Volume
4058075401471	BAG 1	2,000 mm x 40 mm x 26 mm	521.00 g	2.08 dm ³
4058075401488	Bundle 5	2,000 mm x 40 mm x 130 mm	2606.00 g	10.40 dm ³
4058075401495	Shipping box 25	2,040 mm x 210 mm x 160 mm	14404.00 g	68.54 dm ³

The mentioned product code describes the smallest quantity unit which can be ordered. One shipping unit can contain one or more single products. When placing an order, for the quantity please enter single or multiples of a shipping unit.

DISCLAIMER

Subject to change without notice. Errors and omission excepted. Always make sure to use the most recent release.