

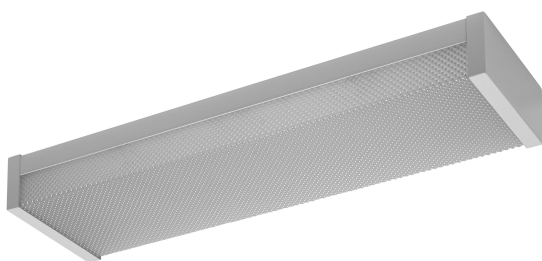
PRODUCT DATASHEET

OFFICE LINE WRAP 0.6M 20W 840 DIM RC

Office Line Double Wrap | Office ceiling luminaire with prismatic diffusor

Areas of application

- Office lighting



Product benefits

- Attractive and functional design for office applications
- Prismatic diffuser to soften and scatter the light
- Dimming via enclosed remote control

Product features

- Lengths available: 0.6 m, 1.2 m
- Lifetime: up to 50,000 h



TECHNICAL DATA

Electrical data

Nominal wattage	20.00 W
Nominal voltage	220...240 V
Mains frequency	50...60 Hz
Nominal current	91.000 mA
Inrush current time T_{h50}	56 μ s
Max. number of luminaires per miniature circuit breaker B16	96
Max. number of luminaires per miniature circuit breaker C10	76
Max. number of luminaires per miniature circuit breaker C16	122
Power factor λ	> 0.90
Total harmonic distortion	< 20 %
Protection class	I

Photometrical data

Luminous flux	2300 lm
Total luminous flux of contained light sources	2600 lm
Luminous efficacy	115 lm/W
Color temperature	4000 K
Light color (designation)	Cool White
Color rendering index Ra	\geq 80
Standard deviation of color matching	\leq 6 sdc _m
Flickering metric (Pst LM)	\leq 1
Stroboscope effect metric (SVM)	\leq 0.4
Photobiological safety group acc. to EN62778	RG0
Beam angle	95 ° x 90 °

Dimensions & Weight

Length	600.00 mm
Width	163.10 mm
Height	71.60 mm
Product weight	1150.00 g



OFFICE LINE WRAP 0.6M 20W
840DIM RC

Materials & Colors

Product color	White
Housing color	White
Body material	Steel
Cover material	Polystyrene (PS)
Glow Wire Test according to IEC 60695-2-12	650 °C
Mercury content	0.0 mg

Application & Mounting

Ambient temperature range	-20...+40 °C
Temperature range at storage	-20...+80 °C
Type of connection	Terminal, 3-Pole (L, N, PE)
Type of protection	IP20
Protection class IK (shock resistance)	IK02
Dimmable	Yes
Type of dimming	PWM
Mounting type	Surface
Mounting location	Ceiling
Application environment	Indoor
LED module replaceable	Not replaceable
With light source	Yes

Lifespan

Lifespan L70/B50 at 25 °C	50000 h ¹⁾
Number of switching cycles	25000

¹⁾ t[h]: L70 / B50 @ 25 °C (Ta), t[h]: L80 / B10 @ 25 °C (Ta), t[h]: L90 / B10 @ 25 °C (Ta)

BATTERY

Battery size [GMS]	CR2025
--------------------	--------

Certificates & Standards

Standards	CE / EAC / UKCA
Luminaire with limited surface temperature, "D sign"	No





Additional product data

Product remark	Available from November 2023
Number of illuminants	empty

EQUIPMENT / ACCESSORIES

- Complete mounting and connecting accessories included
- Remote control included

DOWNLOAD DATA

	Documents and certificates	Document name
	User Instruction	Office line wrap
	Legal information	OFFICE LINE WRAP RC
	Declarations of conformity	CE Declaration Office Line Wrap
	Declarations Of Conformity UKCA	UKCA Declaration Office Line Wrap

LOGISTICAL DATA

Product code	Packaging unit (Pieces/Unit)	Dimensions (length x width x height)	Gross weight	Volume
4058075830912	Folding box 1	76 mm x 171 mm x 607 mm	1383.00 g	7.89 dm ³
4058075830929	Shipping box 4	682 mm x 225 mm x 365 mm	6214.00 g	56.01 dm ³

The mentioned product code describes the smallest quantity unit which can be ordered. One shipping unit can contain one or more single products. When placing an order, for the quantity please enter single or multiples of a shipping unit.

DISCLAIMER

Subject to change without notice. Errors and omission excepted. Always make sure to use the most recent release.