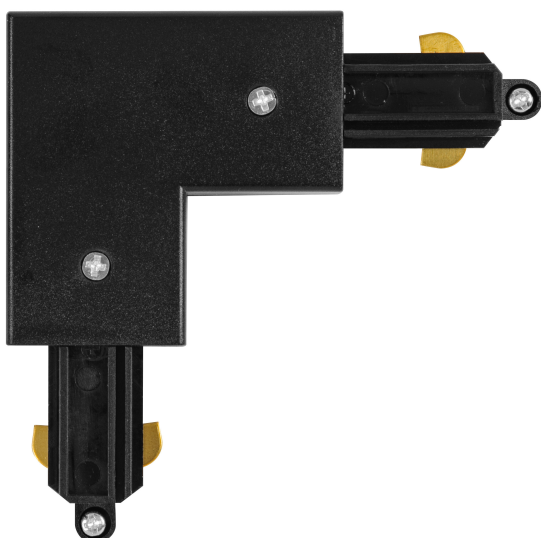


# PRODUCT DATASHEET

## Tracklight Corner Connector Black

Tracklight accessories | Tracklight accessories



### Areas of application

- Kitchens, living rooms, children's rooms or home offices
- Entrance areas

### Product benefits

- Timeless elegant design
- High-quality materials

### Product features

- Customisable modular tracklight system
- Accessories for tracklight system



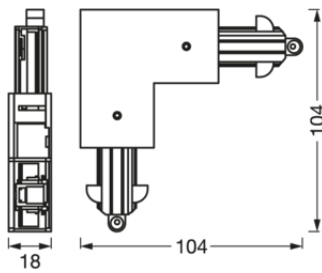
## TECHNICAL DATA

### Electrical data

|                  |             |
|------------------|-------------|
| Nominal voltage  | 220...240 V |
| Mains frequency  | 50/60 Hz    |
| Protection class | I           |

### Dimensions & Weight

|                |          |
|----------------|----------|
| Length         | 104.0 mm |
| Width          | 104.0 mm |
| Height         | 18.0 mm  |
| Product weight | 60.00 g  |



TRACKLIGHT CORNER  
CONNECTOR WT

### Materials & Colors

|               |                  |
|---------------|------------------|
| Product color | Black            |
| Body material | Aluminum/Plastic |




### Application & Mounting

|                           |              |
|---------------------------|--------------|
| Ambient temperature range | -20...+40 °C |
| Type of protection        | IP20         |

### Certificates & Standards

|                |           |
|----------------|-----------|
| Standards      | CE / UKCA |
| Ball shot safe | No        |

## DOWNLOAD DATA

| Documents and certificates   | Document name               |
|--|-----------------------------|
|  User Instruction                | TRACKLIGHT CORNER CONNECTOR |
|  Declarations of conformity      | TRACKLIGHT                  |
|  Declarations Of Conformity UKCA | TRACKLIGHT ACCESSORIES      |

## LOGISTICAL DATA

| Product code  | Packaging unit (Pieces/Unit) | Dimensions (length x width x height) | Gross weight | Volume               |
|---------------|------------------------------|--------------------------------------|--------------|----------------------|
| 4058075764064 | BAG<br>1                     | 20 mm x 170 mm x 200 mm              | 68.00 g      | 0.68 dm <sup>3</sup> |
| 4099854114199 | Shipping box<br>8            | 180 mm x 120 mm x 175 mm             | 639.00 g     | 3.78 dm <sup>3</sup> |

The mentioned product code describes the smallest quantity unit which can be ordered. One shipping unit can contain one or more single products. When placing an order, for the quantity please enter single or multiples of a shipping unit.

## DISCLAIMER

Subject to change without notice. Errors and omission excepted. Always make sure to use the most recent release.