

UK Mounting Hardware for LANmark

LANmark UK Style Angled LJ6C Module 1 Snap-In White

Nexans Ref.: N424.325

- 25 x 38 mm overall dimensions
- Fits standard LJ6C cut-outs
- Designed for LANmark Snap-In connectors
- Also suitable for LANmark fibre Snap-In adaptors
- Equipped with removable shutter
- Labelling area
- Colour white (RAL 9003)
- Polished finish
- Angled design
- Flat version also available

DESCRIPTION

Application

This module can accommodate one LANmark Snap-In connector and is designed to be used in mounting plates with standard LJ6C cut-outs, such as those commonly found in UK style floor boxes.

Due to its angled design, the module provides a real depth benefit behind the connector and ensures that the minimum bend radius of the cable is maintained. Especially when installing high performance cables, such as Category 6A and Category 7/7A, using an angled module is highly recommended.

The module can also be used with LANmark fibre Snap-In adaptors, provided that sufficient space in the floor box is foreseen for the fibre slack.

The module has 25 x 38 mm overall dimensions and has clips to fit into standard LJ6C cut-outs.

Design

The LANmark LJ6C Snap-In module is equipped with a white removable shutter which can easily be replaced with an optional coloured version (7 colours available). This allows differentiation between various services: each application can be allocated a specific colour of shutter on the outlet and floor box in the work area, which can be combined with matching colours of shutters on the panels in the cabinet area and with corresponding colours of latch protectors on the LANmark UniBoot patch cords.

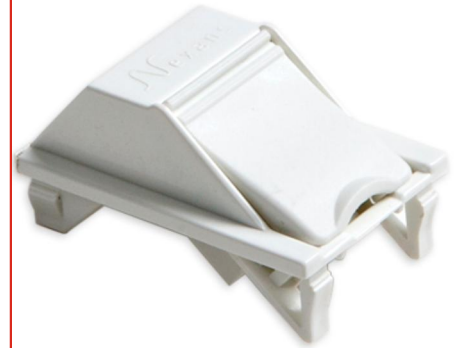
The module is supplied in white (RAL 9003) with a polished finish. The material is PC/ABS and is UL 94V-0 rated and both RoHS and REACH compliant.

A flat version is also available (N424.320).

Installation

LANmark Snap-In connectors can easily be inserted in the aperture with a one-click operation.

The module can be simply clicked in to a mounting plate, without the need for tools.



LANmark

STANDARDS

International ISO/IEC 11801

UK Mounting Hardware for LANmark

LANmark UK Style Angled LJ6C Module 1 Snap-In White

CHARACTERISTICS

Dimensional characteristics

Depth	- mm
Height	- mm
Width	- mm

All drawings, designs, specifications, plans and particulars of weights, size and dimensions contained in the technical or commercial documentation of Nexans is indicative only and shall not be binding on Nexans or be treated as constituting a representation on the part of Nexans.

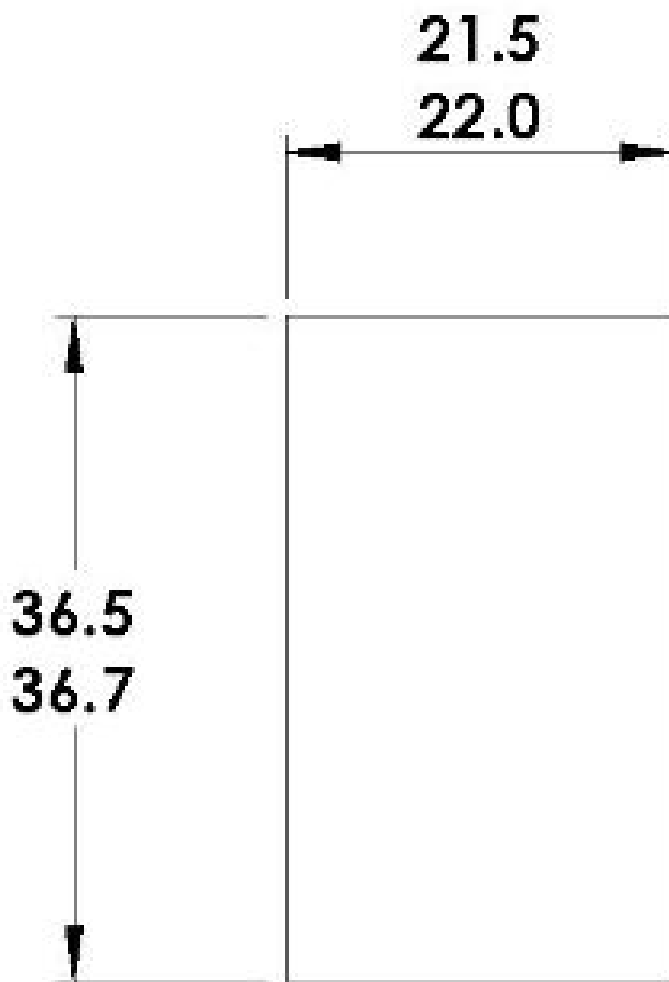
Generated 11/20/23 www.aginode.net Page 2 / 3

UK Mounting Hardware for LANmark

LANmark UK Style Angled LJ6C Module 1 Snap-In White

CUT-OUT DIMENSIONS LJ6C

PANEL CUT-OUT DIMENSIONS FOR LJ6C MODULES PANEL THICKNESS 1.25-2.20



ALL DIMENSIONS IN mm

All drawings, designs, specifications, plans and particulars of weights, size and dimensions contained in the technical or commercial documentation of Nexans is indicative only and shall not be binding on Nexans or be treated as constituting a representation on the part of Nexans.

Generated 11/20/23 www.aginode.net Page 3 / 3