

# UK Mounting Hardware for LANmark

## LANmark UK Style Angled 50 x 50 Module 2 Snap-In White

**Nexans Ref.:** N423.540UN

- Kit of 50x50 back module with Snap-In front module
- Accommodates 2 Snap-In connectors
- Suitable for both copper and fibre
- Installation benefit thanks to angled design
- Colour white

### DESCRIPTION

#### Application

- This UK style 50x50 angled module can accommodate 2 LANmark Snap-In connectors.
- It is also designed to hold fibre Snap-In adaptors, LC or SC, duplex or simplex.
- For detailed information on Nexans Snap-In connectors and fibre adaptors, please refer to the corresponding datasheets.

#### Guarantees

- UL 94V0 plastic material.

#### Installation

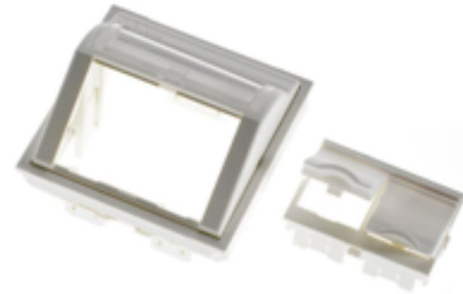
- The LANmark Snap-In connectors easily clip in the shuttered front module, which then is mounted into the 50x50 module without the need for any tools.
- Due to the angled position of the connectors, the minimum bend radius of the cables is maintained, even in situations where depth is restricted.
- The inclined faceplate also protects the patch cords and prevents dust entry when the shutters are left open.
- The 50x50 angled module fits into a wide range of UK style frames, surface mount boxes and trunking.

#### Features:

- Labelling window for easy management and port identification.
- Compatible with all Nexans Snap-In format connectors and adaptors
- Compatible with all Nexans 50x50 structural hardware
- Allows vertical and horizontal mounting in cable ducts
- Side clips can be easily removed if necessary
- Shuttered front module can be inserted in 2 different positions

Included in the kit:

- Labelling window
- Shutters



**LANmark**

### STANDARDS

International ISO/IEC 11801

# UK Mounting Hardware for LANmark

LANmark UK Style Angled 50 x 50 Module 2 Snap-In White

Optional:

- Coloured shutters (bag of 100):
  - red - N421.701RED
  - blue - N421.701BLU
  - green - N421.701GRE
  - yellow - N421.701YEL
  - orange - N421.701ORA
  - black - N421.701BLA
  - dark grey - ref. N421.701DGR

# UK Mounting Hardware for LANmark

LANmark UK Style Angled 50 x 50 Module 2 Snap-In White

## CHARACTERISTICS

### Dimensional characteristics

Depth	36 mm
Height	50 mm
Width	50 mm

All drawings, designs, specifications, plans and particulars of weights, size and dimensions contained in the technical or commercial documentation of Nexans is indicative only and shall not be binding on Nexans or be treated as constituting a representation on the part of Nexans.

Generated 11/20/23 [www.aginode.net](http://www.aginode.net) Page 3 / 3