


00008747	<b>DATA SHEET</b>	
Valid from: 23.05.2022	<b>EPIC® SIGNAL R 3.0 A</b>	

## Description

- Circular connectors with solder termination
- 21-pin and 26-pin
- highest contact density at small space requirements
- Connector in solder version for easy maintenance



## General Characteristics

Series	SIGNAL R 3.0 A
Number of contacts	21-pin / 26-pin
Pin configuration	Male E-part / Female P-part
Coding	N
Rated voltage (V)	24V AC / 60VDC
Rated impulse voltage	1,5 kV
Rated current (A)	7,5 A
Contact resistance	< 3 mOhm
Contacts	Copper alloy, gold plated
Termination methods	Solder termination: up to 1.0 mm <sup>2</sup>
Fastening type	Ø3,2mm (4x)
Protection	IP 67 (maximum, dependant on cable gland used)
Cycle of mechanical operation	500
Temperature range	-40°C to +100°C, short-term up to +125°C

## Materials and Surfaces

Housing	Nickel plated copper alloy
Insert	Thermoplastic
Sealing	Chloroprene Rubber

## Versions

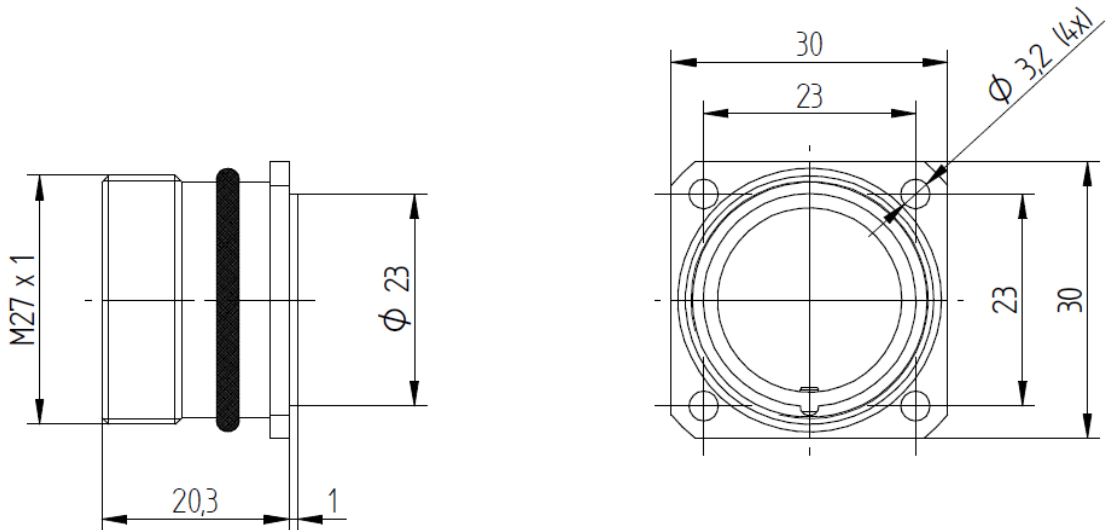
Article number	Article description	Version	Contacts	Pin configuration	Fastening type	Coding
00008747	EPIC® SIGNAL R 3.0 A	male	1 - 21	E-Part	Ø3,2mm (4x)	N
00008825	EPIC® SIGNAL R 3.0 A	male	1 - 26	E-Part	Ø3,2mm (4x)	N
00008867	EPIC® SIGNAL R 3.0 A	female	1 - 21	P-Part	Ø3,2mm (4x)	N
00008746	EPIC® SIGNAL R 3.0 A	female	1 - 26	P-Part	Ø3,2mm (4x)	N

Creator: FICE1/PDP Released: VACH1/PDP	Document: DB00008747EN Version: 02	Page 1 of 3
-------------------------------------------	---------------------------------------	-------------

00008747	<b>DATA SHEET</b>	
Valid from: 23.05.2022	<b>EPIC® SIGNAL R 3.0 A</b>	

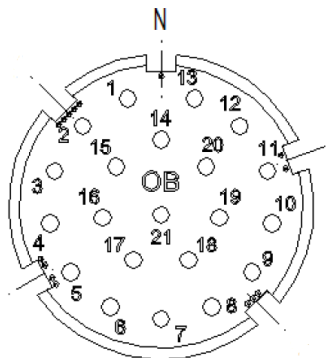
## Technical Drawings

### Housing

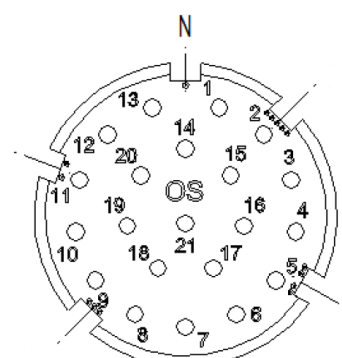


### Inserts (plug-side view)

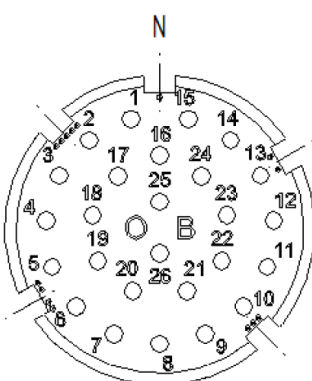
00008867  
P-Part / female 21 pins



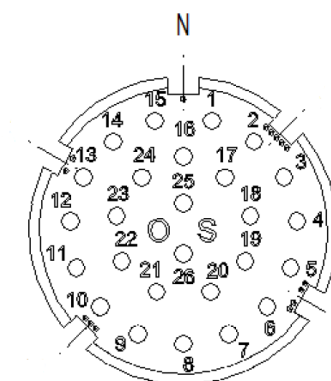
00008747  
E-Part / male 21 pins




00008746  
P-Part / female 26 pins



00008825  
E-Part / male 26 pins

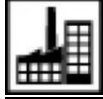


Creator: FICE1/PDP Released: VACH1/PDP	Document: DB00008747EN Version: 02	Page 2 of 3
-------------------------------------------	---------------------------------------	-------------

00008747	<b>DATA SHEET</b>	
Valid from: 23.05.2022	<b>EPIC® SIGNAL R 3.0 A</b>	



Corrosion-resistant



Industrial machinery and plant engineering



Mechanical resistance



Space requirement

### Application range

Machine and equipment manufacturing

Measurement and control technology

### Remark

Photographs are not to scale and do not represent detailed images of the respective products.

Creator: FICE1/PDP Released: VACH1/PDP	Document: DB00008747EN Version: 02	Page 3 of 3
-------------------------------------------	---------------------------------------	-------------