


10239110	DATA SHEET	
Valid from: 17.09.2018	EPIC® H-BVE 6 SS / H-BE 6 BS	

Description

- These high-voltage inserts are additionally equipped with 2 switching contacts
- With the relevant wiring, the lagging switch contacts interrupt the power supply before the working contacts are separated



General Characteristics

Series	H-BVE 6
Version	Male/Female(Article 10240110)
Wire protection	No
Number of Contacts	6 + 2 + PE
Termination Methods	Screw termination: 0.5 - 2.5 mm ²
Temperature Range	-40°C to +100°C, short-term up to +125°C

Mechanical Characteristics

Cycle of mechanical operation	100
-------------------------------	-----

Electrical Characteristics

Rated Voltage, IEC	630 V
Rated Voltage, UL	600 V
Rated Voltage, CSA	600 V
Rated Impulse Voltage	6 kV
Rated Current, IEC	16 A
Rated Current, UL	16 A
Rated Current, CSA	16 A
Contact Resistance	< 2 mOhm
Degree of Soiling	3

Materials and Surfaces

Contacts	Copper alloy, hard silver-plated
Insulating Body	PC
Flammability Class according to UL 94	V0

Approvals

UL-Approval, E-File-Number	E75770
VDE-tested, VDE-REG. no.	B437

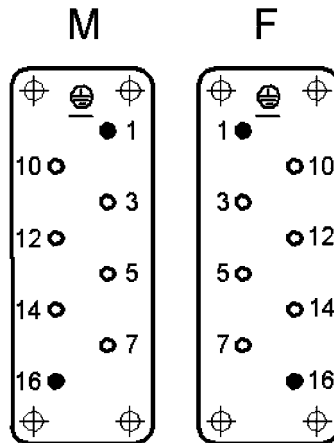
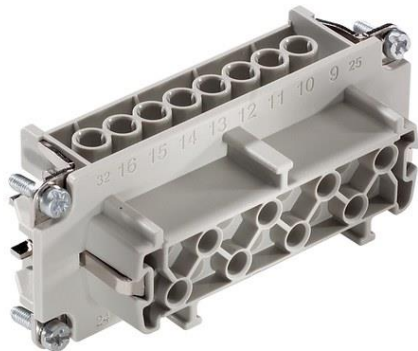
Standard

Safety Standard	IEC 61984, UL 1977
-----------------	--------------------

Creator: MANA2/PDP Released: IVSE1/PDP	Document: DB10239110EN Version: 01	Page 1 of 2
---	---------------------------------------	-------------

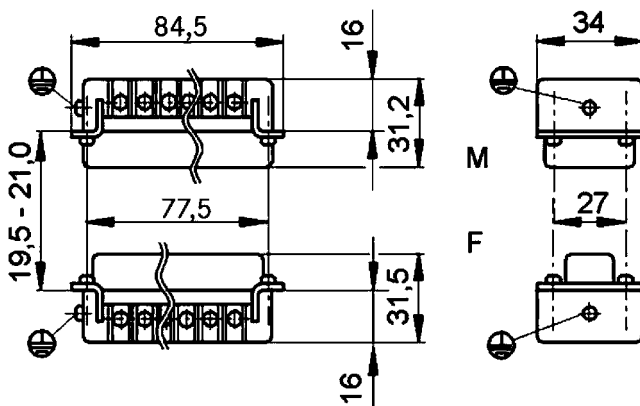
10239110	DATA SHEET	
Valid from: 17.09.2018	EPIC® H-BVE 6 SS / H-BE 6 BS	

Technical Drawing



●
Schaltkontakte
mating contact
contact de branchement

○
Arbeitskontakt
working contact
contact de travail



Industrial machinery and plant engineering



Temperature-resistant

Info

Multipole insert with lagging switch contacts
Switching operations possible for disconnecting under load

Application range

Plant engineering
Mechanical engineering

Remark

Photographs are not to scale and do not represent detailed images of the respective products.

Creator: MANA2/PDP Released: IVSE1/PDP	Document: DB10239110EN Version: 01	Page 2 of 2
---	---------------------------------------	-------------