
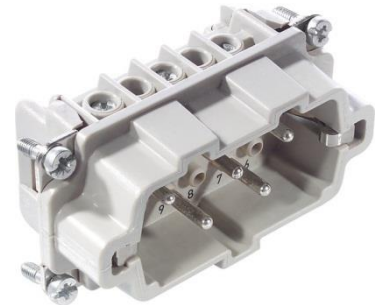


10210010	<b>DATA SHEET</b>	
Valid from: 17.09.2018	<b>EPIC® H-BVE 3 SS / H-BE 3 BS</b>	

## Description

- These high-voltage inserts are additionally equipped with 2 switching contacts
- These high-voltage inserts are additionally equipped with 2 switching contacts
- With the relevant wiring, the lagging switch contacts interrupt the power supply before the working contacts are separated



## General Characteristics

Series	H-BVE 3
Version	Male/Female(Article 10211010)
Wire protection	Yes
Number of Contacts	3 + 2 + PE
Termination Methods	Screw termination: 0.5 - 2.5 mm <sup>2</sup>
Temperature Range	-40°C to +100°C, short-term up to +125°C

## Mechanical Characteristics

Cycle of mechanical operation	100
-------------------------------	-----

## Electrical Characteristics

Rated Voltage, IEC	630 V
Rated Voltage, UL	600 V
Rated Voltage, CSA	600 V
Rated Impulse Voltage	6 kV
Rated Current, IEC	16 A
Rated Current, UL	16 A
Rated Current, CSA	16 A
Contact Resistance	< 2 mOhm
Degree of Soiling	3

## Materials and Surfaces

Contacts	Copper alloy, hard silver-plated
Insulating Body	PC
Flammability Class according to UL 94	V0


## Approvals

UL-Approval, E-File-Number	E75770
VDE-tested, VDE-REG. no.	B437

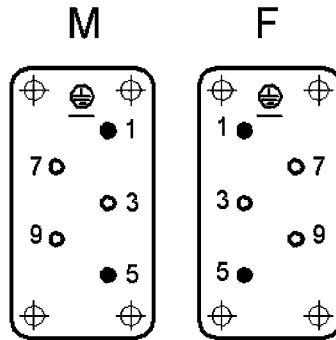
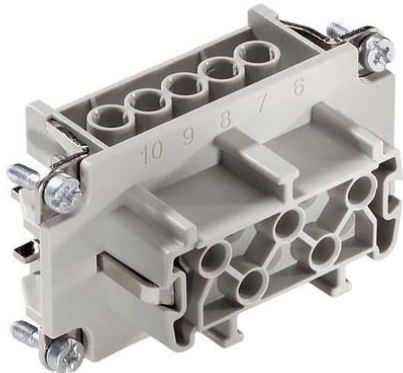
## Standard

Safety Standard	IEC 61984, UL 1977
-----------------	--------------------

Creator: MANA2/PDP Released: IVSE1/PDP	Document: DB10210010EN Version: 01	Page 1 of 2
---	---------------------------------------	-------------

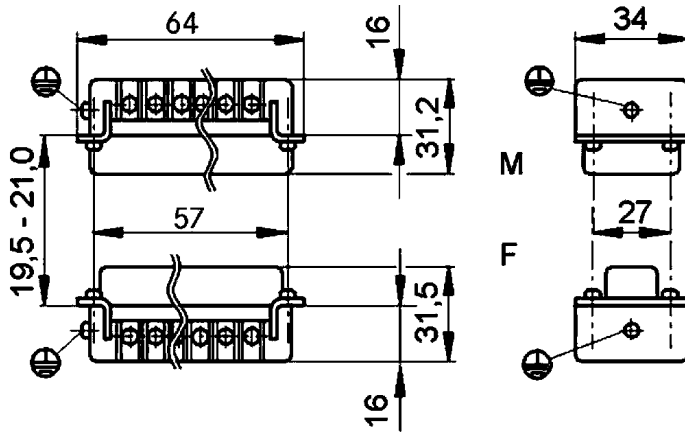
10210010	<b>DATA SHEET</b>	
Valid from: 17.09.2018	<b>EPIC® H-BVE 3 SS / H-BE 3 BS</b>	

### Technical Drawing



● Schaltkontakt  
mating contact  
contact de branchement

○ Arbeitskontakt  
working contact  
contact de travail



Industrial machinery and plant engineering



Temperature-resistant

### Info

Multipole insert with lagging switch contacts  
Switching operations possible for disconnecting under load

### Application range

Plant engineering  
Mechanical engineering

### Remark

Photographs are not to scale and do not represent detailed images of the respective products.

Creator: MANA2/PDP Released: IVSE1/PDP	Document: DB10210010EN Version: 01	Page 2 of 2
---	---------------------------------------	-------------