
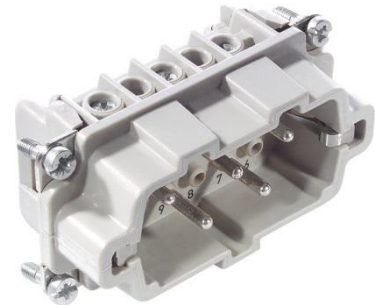


|                           |                                     |   |
|---------------------------|-------------------------------------|---|
| 10210110                  | <b>DATA SHEET</b>                   |  |
| Valid from:<br>17.09.2018 | <b>EPIC® H-BVE 3 SS / H-BE 3 BS</b> |   |

## Description

- These high-voltage inserts are additionally equipped with 2 switching contacts
- These high-voltage inserts are additionally equipped with 2 switching contacts
- With the relevant wiring, the lagging switch contacts interrupt the power supply before the working contacts are separated



## General Characteristics

|                     |  |
|---------------------|--|
| Series              | H-BVE 3                                      |
| Version             | Male/Female(Article 10211110)                |
| Wire protection     | No   |
| Number of Contacts  | 3 + 2 + PE                                   |
| Termination Methods | Screw termination: 0.5 - 2.5 mm <sup>2</sup> |
| Temperature Range   | -40°C to +100°C, short-term up to +125°C     |

## Mechanical Characteristics

|                               |     |
|-------------------------------|-----|
| Cycle of mechanical operation | 100 |
|-------------------------------|-----|

## Electrical Characteristics

|                       |          |
|-----------------------|----------|
| Rated Voltage, IEC    | 630 V    |
| Rated Voltage, UL     | 600 V    |
| Rated Voltage, CSA    | 600 V    |
| Rated Impulse Voltage | 6 kV     |
| Rated Current, IEC    | 16 A     |
| Rated Current, UL     | 16 A     |
| Rated Current, CSA    | 16 A     |
| Contact Resistance    | < 2 mOhm |
| Degree of Soiling     | 3        |

## Materials and Surfaces

|                                       |                                  |
|---------------------------------------|----------------------------------|
| Contacts                              | Copper alloy, hard silver-plated |
| Insulating Body                       | PC                               |
| Flammability Class according to UL 94 | V0                               |


## Approvals

|                            |        |
|----------------------------|--------|
| UL-Approval, E-File-Number | E75770 |
| VDE-tested, VDE-REG. no.   | B437   |

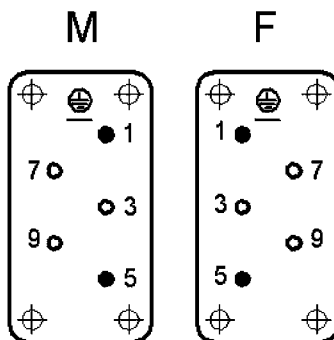
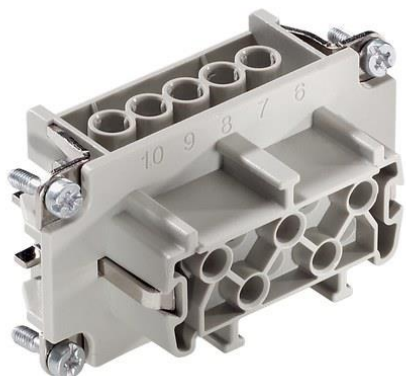
## Standard

|                 |                    |
|-----------------|--------------------|
| Safety Standard | IEC 61984, UL 1977 |
|-----------------|--------------------|

|   |                                       |             |
|---|---------------------------------------|-------------|
| Creator: MANA2/PDP<br>Released: IVSE1/PDP | Document: DB10210110EN<br>Version: 01 | Page 1 of 2 |
|---|---------------------------------------|-------------|

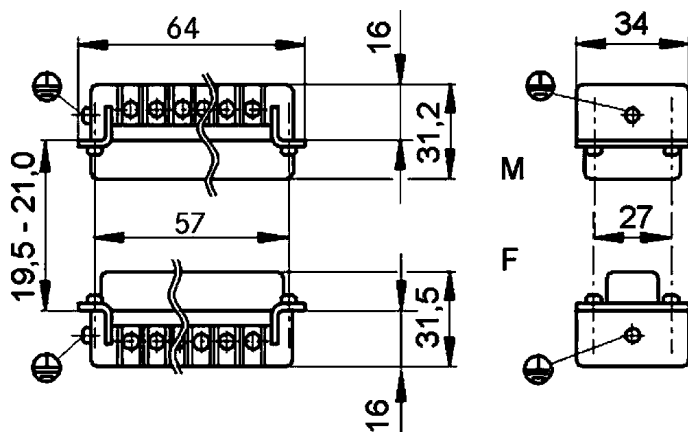
|                           |                                     |   |
|---------------------------|-------------------------------------|---|
| 10210110                  | <b>DATA SHEET</b>                   |  |
| Valid from:<br>17.09.2018 | <b>EPIC® H-BVE 3 SS / H-BE 3 BS</b> |   |

### Technical Drawing



● Schaltkontakt  
mating contact  
contact de branchement

○ Arbeitskontakt  
working contact  
contact de travail



Industrial machinery and plant engineering



Temperature-resistant

#### Info

Multipole insert with lagging switch contacts  
Switching operations possible for disconnecting under load

#### Application range

Plant engineering  
Mechanical engineering

#### Remark

Photographs are not to scale and do not represent detailed images of the respective products.

|   |                                       |             |
|---|---------------------------------------|-------------|
| Creator: MANA2/PDP<br>Released: IVSE1/PDP | Document: DB10210110EN<br>Version: 01 | Page 2 of 2 |
|---|---------------------------------------|-------------|