
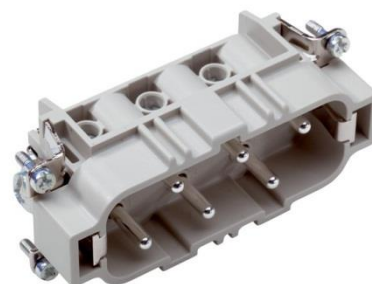


|                           |   |   |
|---------------------------|---|---|
| 10170600                  | <b>DATA SHEET</b>                       |  |
| Valid from:<br>31.05.2023 | <b>EPIC® H-BS 12 SS / H-BS 12 BS DR</b> |   |

## Description

- Inserts for high currents.
- High rating for currents up to 35 A
- Screw termination up to a conductor cross section of 6 mm<sup>2</sup>
- Two H-BS 6 inserts with different contact-numbering for one housing.
- UL tested for control cabinet applications with high SCCR ratings in accordance with UL 508 / UL 2237.



## General Characteristics

|                     |  |
|---------------------|--|
| Series              | H-BS 6                                     |
| Version             | Male: 10170600; Female: 10171600           |
| Wire protection     | Yes  |
| Number of Contacts  | 12 + PE                                    |
| Contacts            | 7-12                                       |
| Termination Methods | Screw termination: 0.5 - 6 mm <sup>2</sup> |
| Temperature Range   | -40°C to +100°C, short-term up to +125°C   |

## Mechanical Characteristics

|                               |     |
|-------------------------------|-----|
| Cycle of mechanical operation | 100 |
|-------------------------------|-----|

## Electrical Characteristics

|  |                                   |
|--|-----------------------------------|
| Rated Voltage, IEC                       | 500 V                             |
| Rated Voltage, UL                        | 600 V                             |
| Rated Voltage, CSA                       | 600 V                             |
| Voltage Conductor-Conductor/Conductor-PE | 690 V / 400V                      |
| Rated Impulse Voltage                    | 6 kV                              |
| Rated Current, IEC                       | 35 A                              |
| Rated Current, UL                        | 35 A                              |
| Rated Current, CSA                       | 35 A                              |
| Contact Resistance                       | < 2 mOhm                          |
| Degree of Soiling                        | 3                                 |
| SCCR                                     | See <a href="#">PVVA2:E483837</a> |


## Materials and Surfaces

|                                       |                                  |
|---------------------------------------|----------------------------------|
| Contacts                              | Copper alloy, hard silver-plated |
| Insulating Body                       | PC                               |
| Flammability Class according to UL 94 | V0                               |

## Approvals

|                            |                 |
|----------------------------|-----------------|
| UL-Approval, E-File-Number | E75770, E483837 |
| VDE-tested, VDE-REG. no.   | B437            |

|   |                                       |             |
|---|---------------------------------------|-------------|
| Creator: THBO1/PDP<br>Released: IVSE1/PDP | Document: DB10170600EN<br>Version: 03 | Page 1 of 2 |
|---|---------------------------------------|-------------|

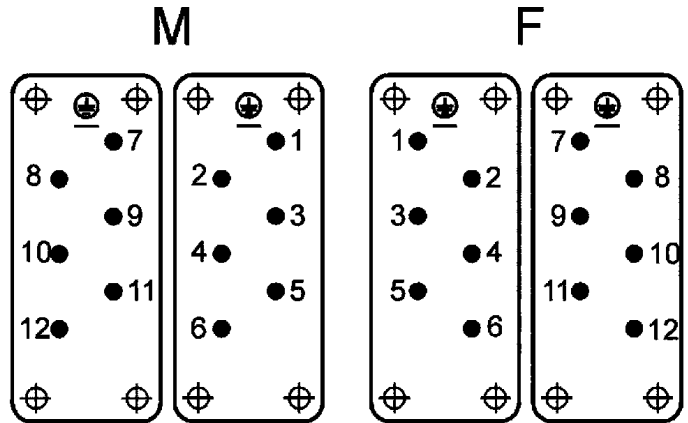
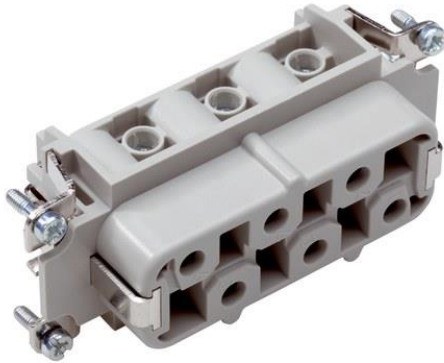
|                           |   |   |
|---------------------------|---|---|
| 10170600                  | <b>DATA SHEET</b>                       |  |
| Valid from:<br>31.05.2023 | <b>EPIC® H-BS 12 SS / H-BS 12 BS DR</b> |   |

**Standard**

Safety/Application Standard

IEC 61984, UL 1977, UL2237, CSA 22.2 182.3

**Technical Drawing**



Industrial machinery and plant engineering



Robust



Temperature-resistant

**Info**

Standard insert for currents up to 35A

**Application range**

- Plant engineering
- Mechanical engineering
- Drive systems

**Remark**

Photographs are not to scale and do not represent detailed images of the respective products.

|   |                                       |             |
|---|---------------------------------------|-------------|
| Creator: THB01/PDP<br>Released: IVSE1/PDP | Document: DB10170600EN<br>Version: 03 | Page 2 of 2 |
|---|---------------------------------------|-------------|