


22260722	DATA SHEET	
Valid from: 19.02.2020	AB-C4-M12MS-PB-TR	

Description

- PROFIBUS M12 terminating resistor



General characteristics

Ambient Temperature (operation)	-25 to +90 °C (-13 to 194 °F)
Protection class	IP 65 / IP 67
Number of pins	4
Coding	B-inverse
Status indicator	No
Mating cycles	≥100
Tightening torque	0.4 Nm (M12-connector)

Mechanical characteristics

Flammability class acc. to UL 94	HB
Contact material	CuSn
Contact surface material	Ni/Au
Contact carrier, material	TPU GF
Gripping body, material	TPU, flame-retardant, self-extinguishing
Knurl, material	Zinc die-cast, nickel-plated


Electrical characteristics

Rated current (at 40 °C)	4 A
Rated voltage	60 V DC
Terminating resistance	390 Ω ±1% (R1) 220 Ω ±1% (R2) 390 Ω ±1% (R3)
Power consumption	0.25 W (R1) 0.25 W (R2) 0.25 W (R3)
Insulation resistance	≥100 MΩ
Surge voltage category	II
Pollution degree	3

Creator: MOKO2/PDP	Document: DB22260722EN	Page 1 of 2
Released: IVSE1/PDP	Version: 05	

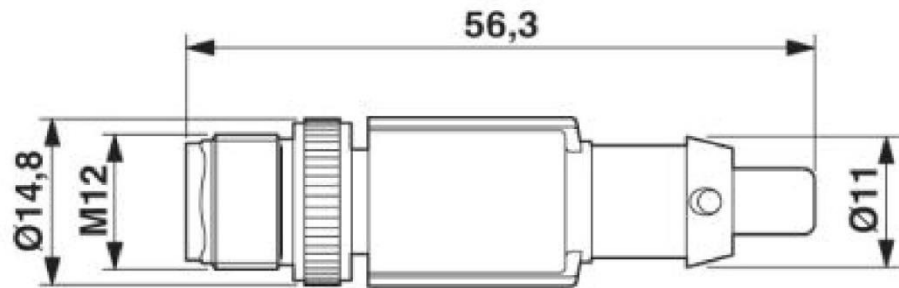
We reserve all rights according to DIN ISO 16016.

PD 0019/05_04.18EN

22260722	DATA SHEET	
Valid from: 19.02.2020	AB-C4-M12MS-PB-TR	

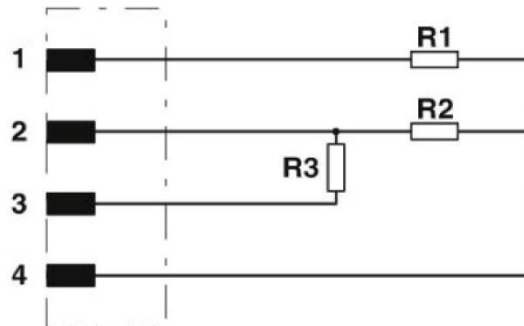
Technical Drawing

Dimensional drawing



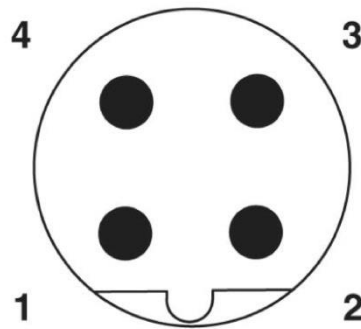
Plug M12x1, straight, shielded

Circuit diagram



Contact assignment of terminating resistor

Schematic drawing



Pin assignment M12 plug, 4-pin, B-coded

Application range

Machine and equipment manufacturing

Note

Photographs are not true to scale and do not represent detailed images of the respective products.

Creator: MOKO2/PDP Released: IVSE1/PDP	Document: DB22260722EN Version: 05	Page 2 of 2
---	---------------------------------------	-------------