


44424049	<b>DATA SHEET</b>	
Valid from: 17.09.2018	<b>EPIC<sup>®</sup> H-Q 12 SC / H-Q 12 BC</b>	

## Description

- With 12 working contacts in the proven crimp technology and one PE contact with screw termination.
- High performance crimping contacts
- PE contact with screw connection



## General Characteristics

Series	H-Q 12
Version	Male/Female(Article 44424049 / 44424050)
Number of Contacts	12+PE
Termination Methods	Crimp termination: 0,14 - 2.5 mm <sup>2</sup>
Temperature Range	-40°C to +120°C, short-term up to +125°C

## Mechanical Characteristics

Cycle of mechanical operation	200
-------------------------------	-----

## Electrical Characteristics

Rated Voltage, IEC	400 V
Rated Voltage, UL	600 V
Rated Voltage, CSA	600 V
Rated Impulse Voltage	6 kV
Rated Current, IEC	10 A
Rated Current, UL	14 A
Rated Current, CSA	10 A
Contact Resistance	< 3 mOhm
Degree of Soiling	3

## Materials and Surfaces

Contacts	Copper alloy, hard silver/gold-plated
Flammability Class according to UL 94	V0


## Approvals

UL-Approval, E-File-Number	E75770
----------------------------	--------

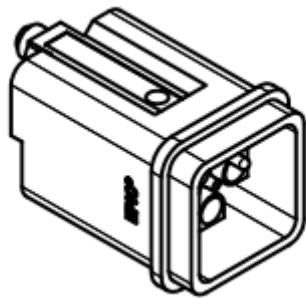
## Standard

Safety Standard	IEC 61984, UL 1977
-----------------	--------------------

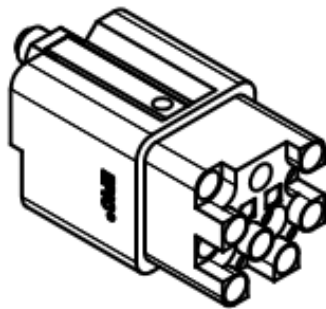
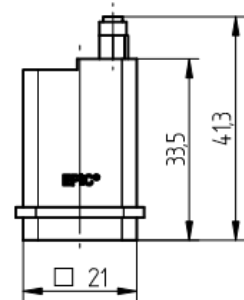
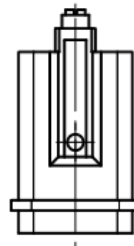
Creator: JOKR1/PDP Released: IVSE1/PDP	Document: DB44424049EN Version: 01	Page 1 of 2
---	---------------------------------------	-------------

44424049	<b>DATA SHEET</b>	
Valid from: 17.09.2018	EPIC® H-Q 12 SC / H-Q 12 BC	

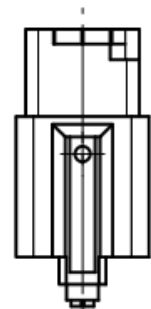
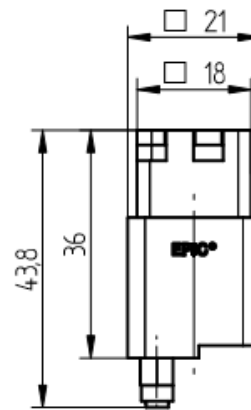
## Technical Drawings



Polbild - M



Polbild - F



Industrial machinery and plant engineering

### Info

Compact, powerful standard insert  
Space saving, crimping contact

### Application range

Machine and equipment manufacturing  
Control engineering

### Remark

Photographs are not to scale and do not represent detailed images of the respective products.

Creator: JOKR1/PDP Released: IVSE1/PDP	Document: DB44424049EN Version: 01	Page 2 of 2
---	---------------------------------------	-------------