

52010000	DATA SHEET	
Valid from: 03.07.2018	SKINDICHT® EH	

Earth sleeve for SKINDICHT® SHVE and SKINDICHT® SRE.

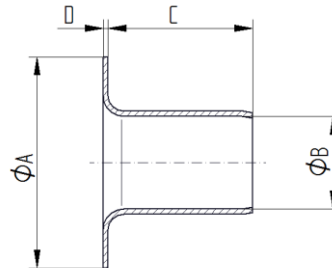
Material: Brass, bright

Temperature range: -60°C up to +200°C



Norm references:

For more information please see our current catalogue.



Article designation	Diameter Ø A mm	Diameter Ø B mm	Length C mm	Thickness D mm	Article No.
EH 9 / 3,2	13,3	3,2	11	0,3	52010980
EH 9 / 3,7	13,7	3,6	9,7	0,3	52010985
EH 11 / 4,5	16,7	4,5	9	0,3	52010996
EH 13,5 / 5	18,5	5	14	0,3	52010000
EH 13,5 / 6	18,5	6	14	0,3	52010010
EH 13,5 / 7	18,5	7	14	0,3	52010020
EH 16 / 8	20,5	8	14	0,3	52010030
EH 16 / 9	20,5	9	14	0,3	52010040
EH 16 / 10	20,5	10	14	0,3	52010050
EH 16 / 11	20,5	11	17	0,3	52010060
EH 21 / 12	26	12	16	0,4	52010070
EH 21 / 13	26	13	16	0,4	52010080
EH 21 / 14	26	14	16	0,4	52010090
EH 21 / 15	26	15	16	0,4	52010100
EH 21 / 16	26	16	16	0,4	52010110
EH 29 / 17	35	17	18	0,4	52010120
EH 29 / 18	35	18	18	0,4	52010130
EH 29 / 19	35	19	18	0,4	52010140
EH 36 / 22	45	22	10	0,4	52010161
EH 36 / 24	45	24	10	0,4	52010162
EH 36 / 26	45	26	10	0,4	52010163
EH 36 / 28	45	28	10	0,4	52010164

For more information please see our current catalogue. Please do not hesitate to contact our laboratory if there are any questions regarding resistance against aggressive agents and special oil.

Creator: M. Wegerer /PDP Released: DAMU1/PDP	Document: DB52010000EN Version: 02	Page 1 of 1
---	---------------------------------------	-------------