

52003990	DATA SHEET	
Valid from: 03.07.2018	SKINDICHT® ME	

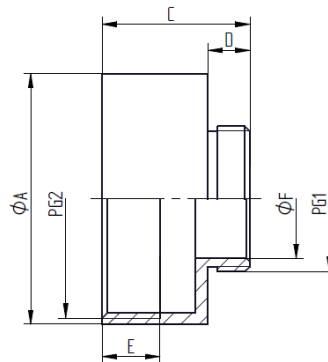
The SKINDICHT® ME is an extension ring.
It is used if threaded openings are too small for the necessary glands.



Technical features:

Material	Brass, nickel-plated
External thread	PG7 up to PG42 acc. to DIN 40430
Internal thread	PG9 up to PG48 acc. to DIN 40430
Temperature range	-60°C up to +200°C

Norm references:



External tread PG1	Internal thread PG2	Diameter Ø A mm	Length C mm	Thread Length D mm	Thread Length E mm	Diameter Ø F mm	Article No.
PG 7	PG 9	17	15	5	7	10	52003990
PG 9	PG 11	20	16,5	6	7	12,5	52004000
PG 9	PG 13,5	22	17,5	6	7,5	12,5	52004010
PG 11	PG 13,5	22	17,5	6	7,5	15	52004020
PG 11	PG 16	24	18,5	6	7,5	15	52004030
PG 11	PG 21	30	20,5	6	8,5	15	52004040
PG 13,5	PG 16	24	19	6,5	7,5	17	52004050
PG 13,5	PG 21	30	21	6,5	8,5	17	52004060
PG 16	PG 21	30	21	6,5	8,5	18,5	52004070
PG 16	PG 29	39	22,5	6,5	9	18,5	52004080
PG 21	PG 29	39	23	7	9	24	52004090
PG 29	PG 36	50	27,5	8	15,5	32	52004100
PG 36	PG 42	57	31	9	15	42	52004110
PG 42	PG 48	64	33	10	17	48	52004120

For more information please see our current catalogue. Please do not hesitate to contact our laboratory if there are any questions regarding resistance against aggressive agents and special oil.

Creator: M. Wegerer /PDP Released: DAMU1/PDP	Document: DB52003990EN Version: 02	Page 1 of 1
---	---------------------------------------	-------------