


55510300	DATA SHEET	
Valid from: 03.07.2018	SILVYN® LTP 45° M	

SILVYN® LTP 45° M is an elbow Brass-Conduit gland with polyamide sealing for fixed applications. The gland can be used due to his properties in mechanical demanding environments.

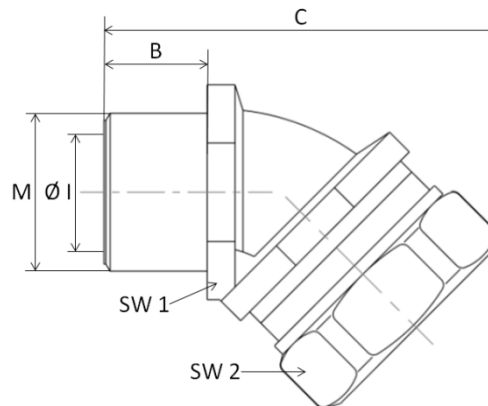
- Material:** Gland – Brass, Nickel plated
Seal – PA
- Features:** High tensile strength
Oil resistant
Corrosion resistant
Halogen, Sulphur and Phosphorous free
Vibration and shock resistant



Temperature range: -50°C up to +135°C

Norm Reference:  
DIN EN 61386

Protection class: IP66, IP67, IP68 (5bar) and IP69K



Dimension table:

Part No.	Description	NW	Thread M	Inner Diameter Ø I mm	Thread length B mm	Length C mm	SW 1	SW 2
5551 0300	SILVYN® LTP 45° M20x1,5/1	16	M20x1,5	10,7	13,0	44,8	24	26
5551 0301	SILVYN® LTP 45° M20x1,5/2	20	M20x1,5	14,5	13,0	49,5	24	29
5551 0302	SILVYN® LTP 45° M25x1,5	25	M25x1,5	18,0	14,0	63,0	30	35
5551 0303	SILVYN® LTP 45° M32x1,5	32	M32x1,5	24,6	15,0	76,6	36	42
5551 0304	SILVYN® LTP 45° M40x1,5	40	M40x1,5	32,7	18,0	86,9	47	57
5551 0305	SILVYN® LTP 45° M50x1,5	50	M50x1,5	37,7	18,0	93,4	61	62
5551 0306	SILVYN® LTP 45° M63x1,5	63	M63x1,5	49,0	20,0	111,0	67	76

Suitable Conduit: SILVYN® LTP

Accessories: SKINDICHT® FLACHDICHTUNG

For more information please see our current catalogue. Please do not hesitate to contact our laboratory if there are any questions regarding resistance against aggressive agents and special oil.

Creator: M. Wegerer /PDP Released: DAMU1/PDP	Document: DB55510300EN Version: 01	Page 1 of 1
---	---------------------------------------	-------------