

55503600	DATA SHEET	
Valid from: 03.07.2018	SILVYN® FCE-F	

SILVYN® FCE-F is a fixed two-part conduit gland, made of nickel plated brass. The gland is suitable to the protection conduits SILVYN® FCE-V0 and SILVYN® FCE-LFH.



Material:

Body	Nickel plated brass
Sleeve	Nickel plated brass

Technical Features:

Connecting thread	M10x1,0 up to M63x1,5
Nominal wide	NW 10 up to NW 50
Protection class	IP54 acc. to EN 60529
Temperature range	Depending on the used conduit -55°C up to +260°C

Additional features:

Rugged
Corrosion resistant

Colour:

metallic shiny

Approbation:



Reference standards:

EN 61386-1

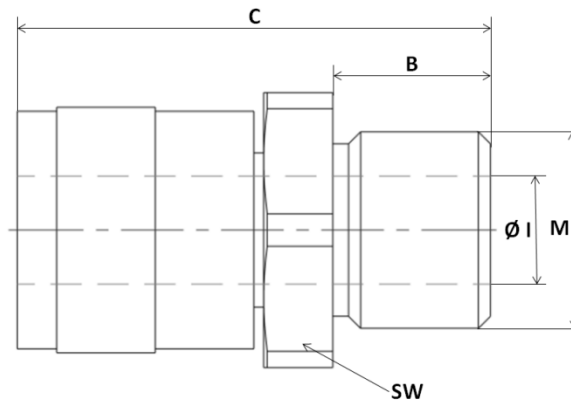
Suitable conduits:

SILVYN® FCE-V0
SILVYN® FCE-LFH

Creator: MAU1/PDP Released: DAMU1/PDP	Document: DB55503600EN Version: 01	Page 1 of 2
--	---------------------------------------	-------------

55503600	DATA SHEET	
Valid from: 03.07.2018	SILVYN® FCE-F	

Product drawing:



Dimension table:

Part No.	NW	Thread M	Thread length B mm	Inner Diameter Ø I mm	Length C mm	SW	Weight Kg/100
5550 3600	10	M10x1,0	8	5,5	24	14	1,3
5550 3601	10	M12x1,5	8	5,5	24	14	1,4
5550 3602	12	M12x1,5	10	8,5	26	18	1,8
5550 3603	12	M16x1,5	10	8,5	26	18	2,0
5550 3604	16	M16x1,5	10	11,2	27	20	2,3
5550 3605	16	M20x1,5	10	11,2	27	22	2,6
5550 3606	20	M20x1,5	10	15,2	27	24	3,0
5550 3607	25	M25x1,5	12	19,2	32	30	5,4
5550 3608	32	M32x1,5	13	25,9	35	38	8,1
5550 3609	40	M40x1,5	14	34,8	41	48	15,0
5550 3610	50	M50x1,5	15	44,8	45	60	22,4
5550 3611	50	M63x1,5	16	44,8	46	70	28,6

For more information please see our current catalogue. Please do not hesitate to contact our laboratory if there are any questions regarding resistance against aggressive agents and special oil.

Creator: MAU1/PDP Released: DAMU1/PDP	Document: DB55503600EN Version: 01	Page 2 of 2
--	---------------------------------------	-------------