


6180 1020	<b>DATA SHEET</b>	
Valid from: 14.05.2018	<b>SILVYN® KLICK 90° PG</b>	

SILVYN® KLICK 90° PG is a conduit gland with push-in closure for quick secure assembly. The dismantling is done by displacing the snap-in sleeve. The gland is suitable for conduit type SILVYN® RILL and can be used in machine and plant constructions and in isolated electrical installations.



**Material:**

Body Polyamide  
Sealing TPE

**Technical Features:**

Connecting thread PG 9 up to PG 48 acc. to EN 40430  
Nominal wide NW 13 up to NW 54,5  
Protection class IP68 acc. to EN 60529  
IP69K acc. to DIN 40050 T.9  
Depending on the used conduit  
Temperature range -40°C up to +115°C

**Additional features:**

Fire classification HB acc. to UL94  
Free of silicone, cadmium and halogen  
UV-Resistant SILVYN® KLICK PG 90° black

**Colour:**

Black  
Grey

**Approbation:**



**Reference standards:**


EN IEC 61386-23

**Suitable conduits:**

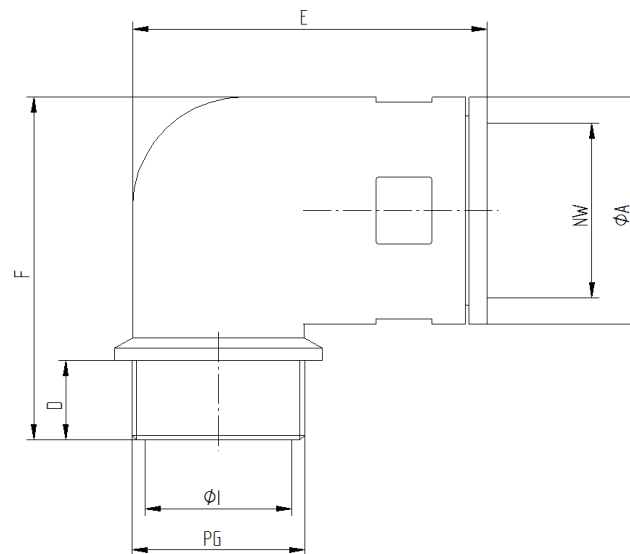
SILVYN® RILL PA 6  
SILVYN® RILL PA 12

For more information please see our current catalogue. Please do not hesitate to contact our laboratory if there are any questions regarding resistance against aggressive agents and special oil.

Creator: MAU1/PDP Released: DAMU1/PDP	Document: DB61801020EN Version: 04	Page 1 of 2
------------------------------------------	---------------------------------------	-------------

6180 1020	<b>DATA SHEET</b>	
Valid from: 14.05.2018	<b>SILVYN® KLICK 90° PG</b>	

**Product drawing:**



**Dimension table:**

Part No.	NW	Thread PG	Thread length D mm	Length E mm	Length F mm	Diameter mm		Weight kg/100
						ØI	ØA	
<b>SILVYN® KLICK 90° PG grey</b>								
6180 1020	13	PG 9	10,0	37,0	34,0	12,0	20,0	0,6
6180 1030	15,8	PG 11	10,0	42,0	37,5	15,5	23,0	0,8
5600 0100	18,5	PG 13,5	13,0	46,0	47,0	13,5	26,5	1,4
6180 1040	21,2	PG 16	13,0	50,0	48,0	18,0	29,5	1,6
6180 1050	28,5	PG 21	13,0	58,0	56,0	24,0	37,0	2,5
6180 1060	34,5	PG 29	15,0	67,5	65,0	32,0	44,0	4,1
6180 1061	42,5	PG 36	15,0	83,0	72,0	36,5	52,0	6,6
6180 1062	54,5	PG 48	16,0	96,0	84,0	48,5	64,0	9,5
<b>SILVYN® KLICK 90° PG black</b>								
6180 1025	13	PG 9	10,0	37,0	34,0	12,0	20,0	0,6
6180 1035	15,8	PG 11	10,0	42,0	37,5	15,5	23,0	0,8
5600 0105	18,5	PG 13,5	13,0	46,0	47,0	13,5	26,5	1,4
6180 1045	21,2	PG 16	13,0	50,0	48,0	18,0	29,5	1,6
6180 1055	28,5	PG 21	13,0	58,0	56,0	24,0	37,0	2,5
6180 1065	34,5	PG 29	15,0	67,5	65,0	32,0	44,0	4,1
6180 1085	54,5	PG 48	16,0	96,0	84,0	48,5	64,0	9,5