





61801090	DATA SHEET	
Valid from: 03.07.2018	SILVYN® KLICK-Y	

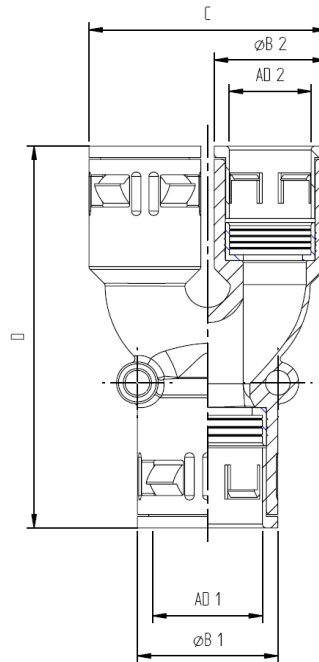
SILVYN® KLICK-Y is a one-part Y-formed conduit distributor. The distributor has three Snap-In-Locks for a simple and safety assembling and disassembling – by rotating the locking sleeve. SILVYN® KLICK-Y fits to the conduit SILVYN® RILL and can by two M5 screws easily mounted.



- Material:** Body – PA
Sealing – TPE
- Feature:** Push-In-Lock for coarse and fine profile conduits
Simply demounting
High mechanical stress
- Resistance:** To oil and benzene
Widely resistant to acids and solvents
- Temperature range:** -40°C up to +115°C
- Colour:** Grey RAL 7001
Black (UV-resistance)
- Norm Reference:**


UL FILENUMBER E308201
- Note:** Free of silicone, cadmium and halogen
- Protection class:** IP 68 and IP 69 acc. to DIN 40050 T.9

Creator: M. Wegerer /PDP Released: DAMU1/PDP	Document: DB61801090EN Version: 04	Page 1 of 2
---	---------------------------------------	-------------

61801090	DATA SHEET	
Valid from: 03.07.2018	SILVYN® KLICK-Y	



Dimension table:

Part No.	Nominal size AD 1	Nominal size AD 2	Outer Ø B1 mm	Outer Ø B2 mm	Total wide C mm	Total length D mm	Screw hole mm	Distance screw holes mm
SILVYN KLICK-Y (PA) - grey								
6180 1090	1 x 13	2 x 10	20	17	36	68	2 x 5,5	23,5
6180 1100	1 x 13	2 x 13	20	20	42	70	2 x 5,5	23,5
6180 1110	1 x 15,8	2 x 13	23	20	42	71	2 x 5,5	29
5600 0130	1 x 15,8	2 x 15,8	23	23	48	80	2 x 5,5	29
SILVYN KLICK-Y (PA) - black								
6180 1095	1 x 13	2 x 10	20	17	36	68	2 x 5,5	23,5
6180 1105	1 x 13	2 x 13	20	20	42	70	2 x 5,5	23,5
6180 1115	1 x 16	2 x 13	23	20	42	71	2 x 5,5	29
5600 0135	1 x 16	2 x 16	23	23	48	80	2 x 5,5	29

Weitere Angaben entnehmen Sie bitte unserem aktuellen Katalog.
Bei Beständigkeitsfragen über aggressive Medien oder bestimmte Öle kann unser Labor Sie gerne beraten.

Creator: M. Wegerer /PDP Released: DAMU1/PDP	Document: DB61801090EN Version: 04	Page 2 of 2
---	---------------------------------------	-------------